

# Nave Logistik II

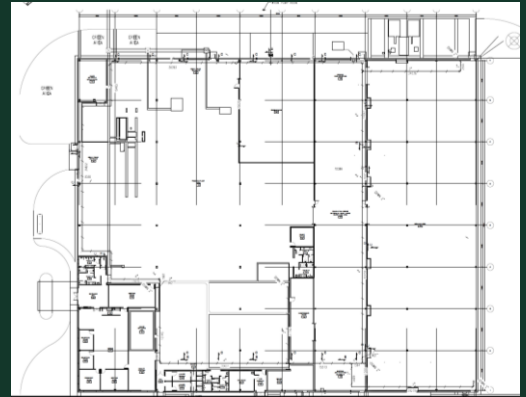
San Luis Potosí

7,505m<sup>2</sup> techados y terreno para expansión

Ubicada dentro del Parque Industrial Logistik II, en el corazón industrial de la ciudad de San Luis Potosí, a menos de 5min de la planta Armadora de BMW y GM.

[Av. Bangalore](#)

Parque Industrial Logistik II



## Nave Logistik II

Av. Bangalore, Parque Industrial Logistik II | SLP

For Sale/Lease

# Características

- + Área total: 18,251 m<sup>2</sup>
- + Área de producción: 6,487 m<sup>2</sup>
- + Oficinas y comedor
- + Terreno para expansión
- + Altura libre en nave: 7.9m
- + Subestación eléctrica 3 transformadores de 1,00KVAs c/u
- + Planta de tratamiento de agua 17m<sup>3</sup>/min
- + Pozo de agua con capacidad de 300,000m<sup>3</sup> por año
- + Área techada para almacén, cuarto de bombas y cuarto de residuos peligrosos

### Distancia a principales ciudades

Querétaro	186 km
Guanajuato	149 km
Aguascalientes	190 km
CDMX	388 km



## Contáctanos



### Franz Esteves

Broker  
+52 55 4540 1476  
Franz.esteves@cbre.com



### Karen Renovato

Broker  
+52 444 447 7269  
Karen.renovato@cbre.com

© 2021 CBRE, Inc. All rights reserved. This information has been obtained from sources believed reliable, but has not been verified for accuracy or completeness. You should conduct a careful, independent investigation of the property and verify all information. Any reliance on this information is solely at your own risk. CBRE and the CBRE logo are service marks of CBRE, Inc. All other marks displayed on this document are the property of their respective owners, and the use of such logos does not imply any affiliation with or endorsement of CBRE. Photos herein are the property of their respective owners. Use of these images without the express written consent of the owner is prohibited.